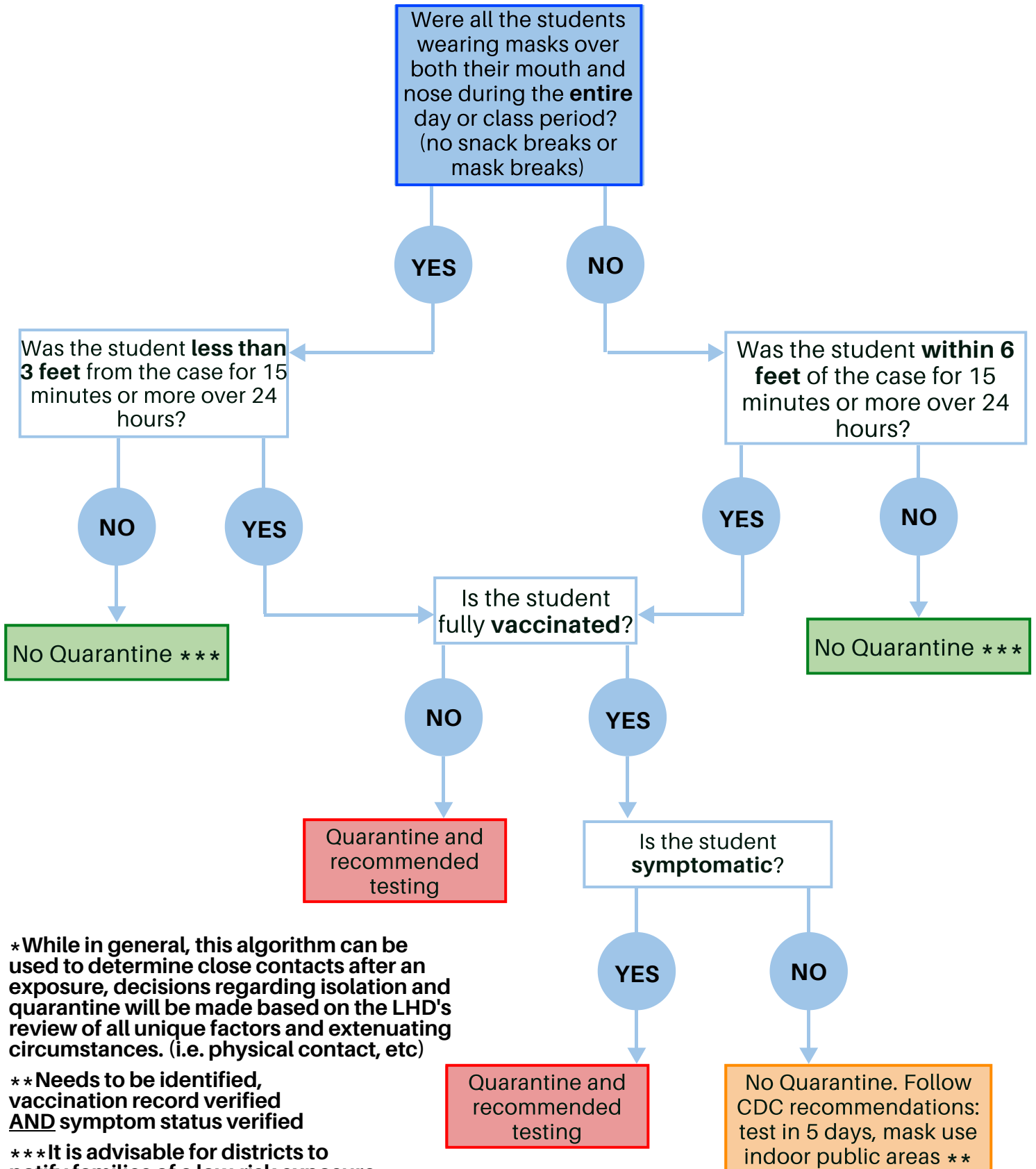


INSTRUCTIONAL SETTING: STUDENT CASE / STUDENT CONTACTS *



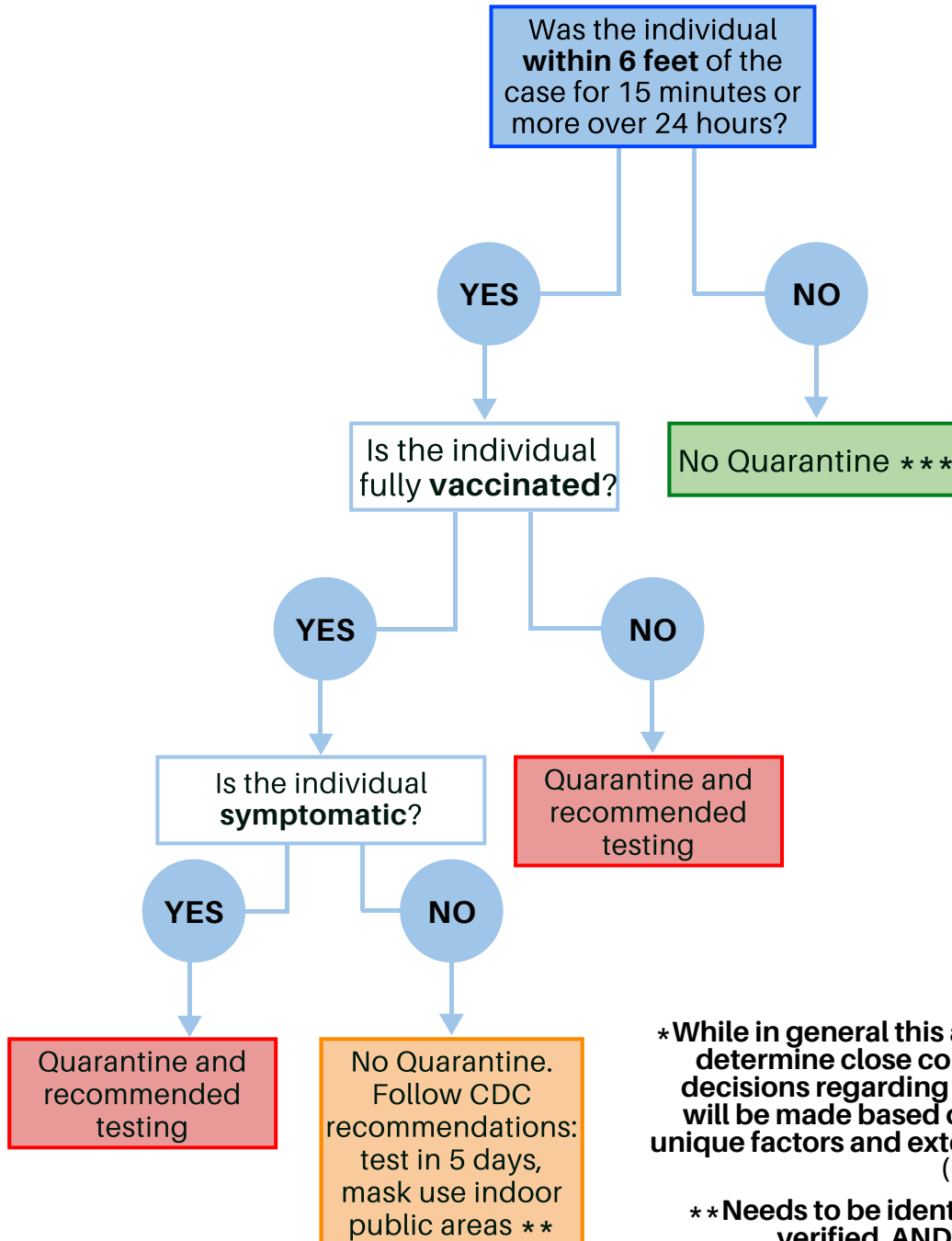
*While in general, this algorithm can be used to determine close contacts after an exposure, decisions regarding isolation and quarantine will be made based on the LHD's review of all unique factors and extenuating circumstances. (i.e. physical contact, etc)

** Needs to be identified, vaccination record verified AND symptom status verified

*** It is advisable for districts to notify families of a low-risk exposure when the individual doesn't meet the CDC criteria of a close contact

INSTRUCTIONAL SETTING:

ADULT CASE / STUDENT CONTACTS *
ADULT CASE / ADULT CONTACTS *
STUDENT CASE / ADULT CONTACTS *

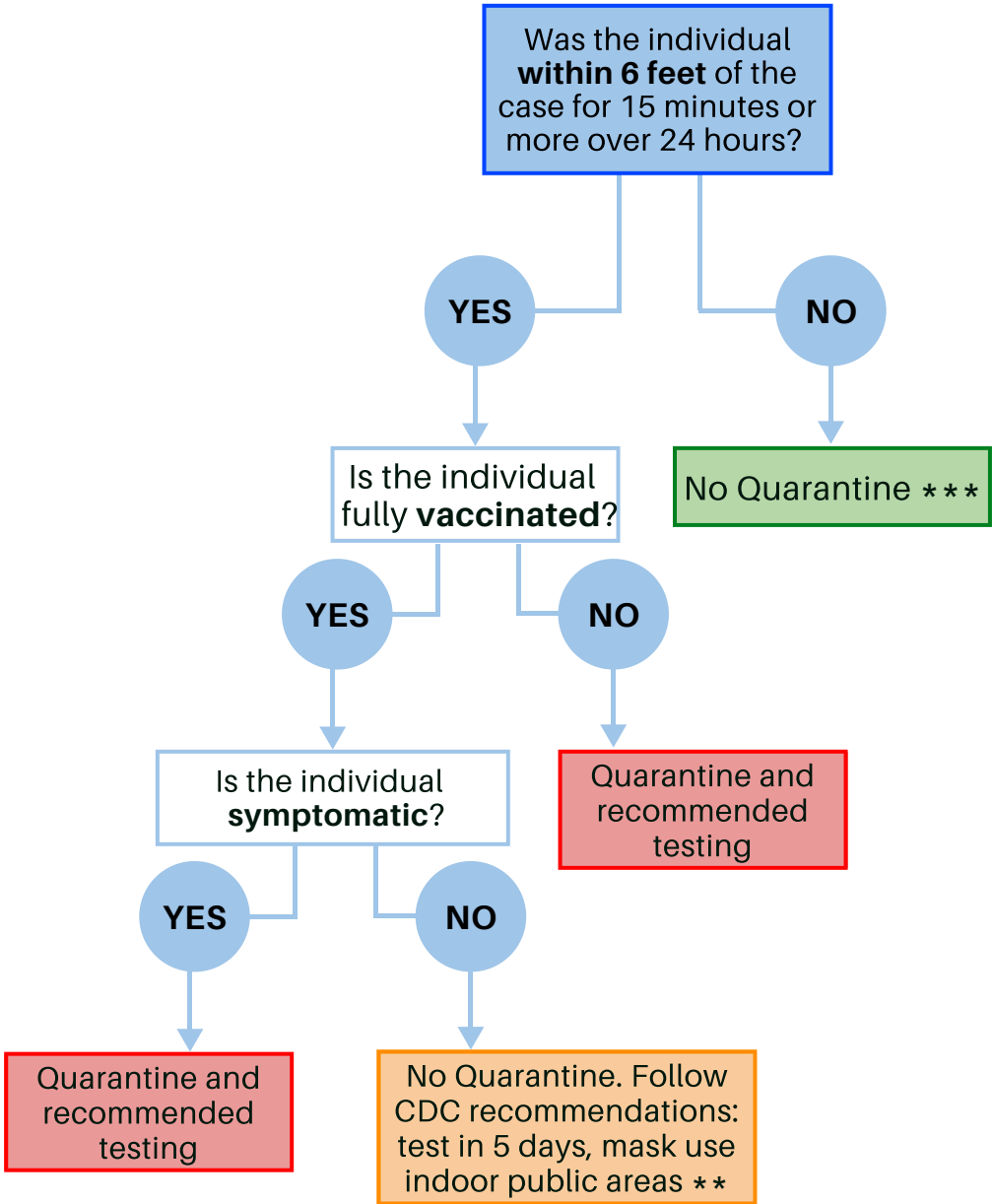


*While in general this algorithm can be used to determine close contacts after an exposure, decisions regarding isolation and quarantine will be made based on the LHD's review of all unique factors and extenuating circumstances. (i.e. physical contact, etc)

**Needs to be identified, vaccination record verified AND symptom status verified

***It is advisable for districts to notify families of a low-risk exposure when the individual doesn't meet the CDC criteria of a close contact

SCHOOL: LUNCHROOM *



*While in general this algorithm can be used to determine close contacts after an exposure, decisions regarding isolation and quarantine will be made based on the LHD's review of all unique factors and extenuating circumstances. (i.e. physical contact, etc)

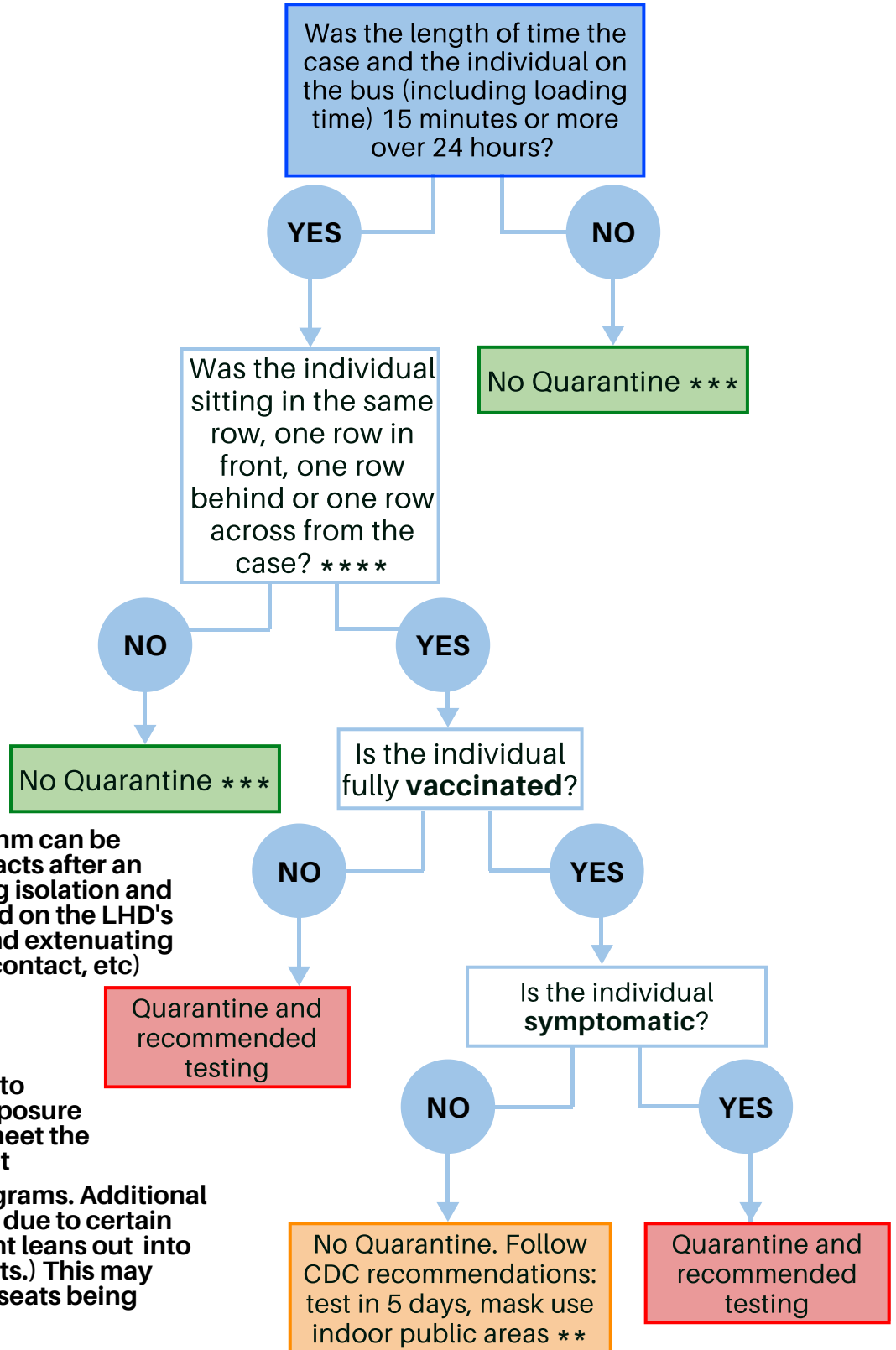
**Needs to be identified, vaccination record verified AND symptom status verified

***It is advisable for districts to notify families of a low-risk exposure when the individual doesn't meet the CDC criteria of a close contact

Requirements: Consistent and correct mask usage is required during the entire loading, transport, and disembarking process.

Recommendations: Windows open or at least cracked for the entire duration and assigned seats.

SCHOOL: TRANSPORTATION *



* While in general, this algorithm can be used to determine close contacts after an exposure, decisions regarding isolation and quarantine will be made based on the LHD's review of all unique factors and extenuating circumstances. (i.e. physical contact, etc)

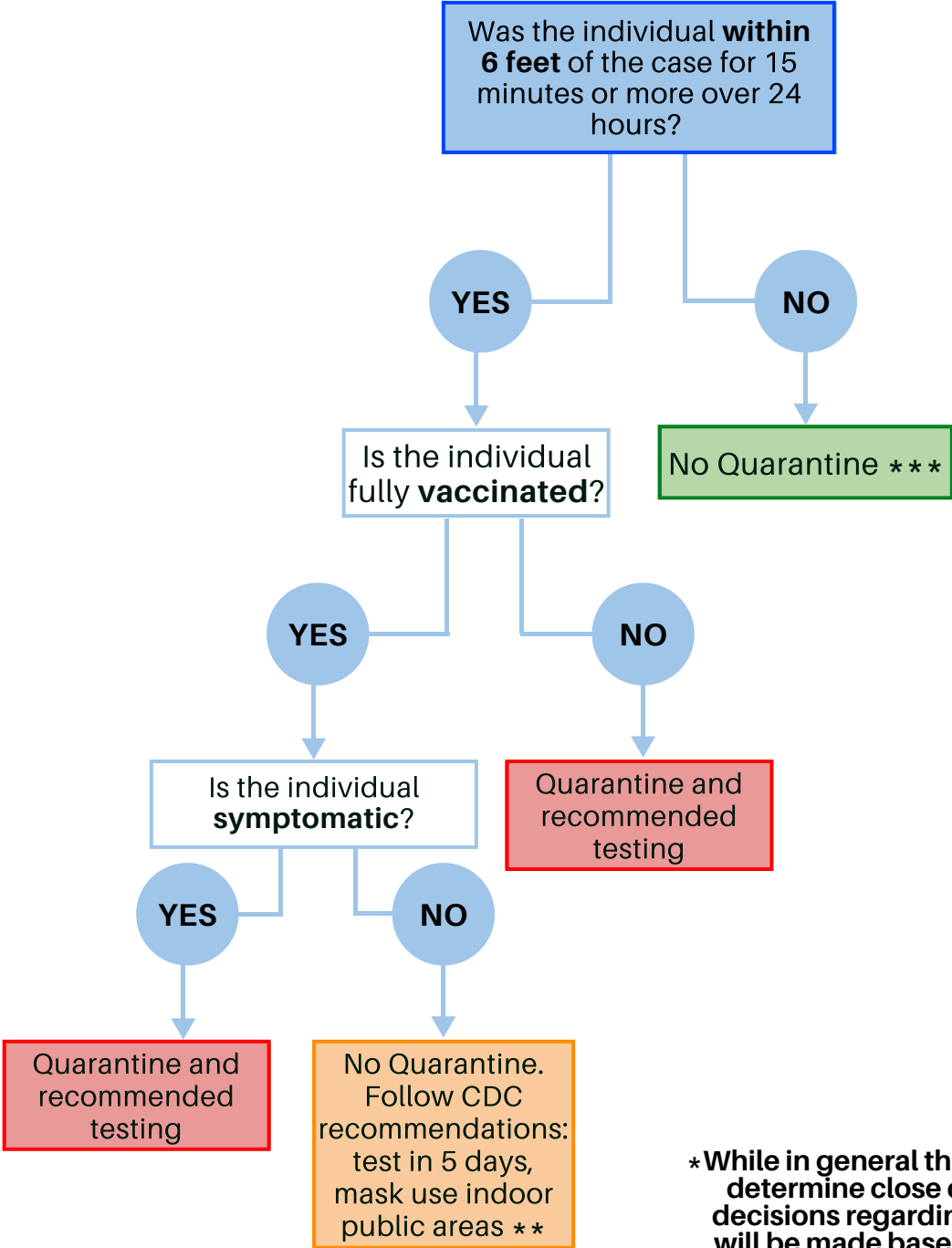
** Needs to be identified, vaccination record verified AND symptom status verified

*** It is advisable for districts to notify families of a low-risk exposure when the individual doesn't meet the CDC criteria of a close contact

**** See Transportation Diagrams. Additional students may be quarantined due to certain scenarios. (i.e. a young student leans out into the aisle or hugs other students.) This may result in students in diagonal seats being placed on quarantine.

SCHOOL: SPORTS *

Note: If school transportation was utilized, follow transportation algorithm for additional contact tracing



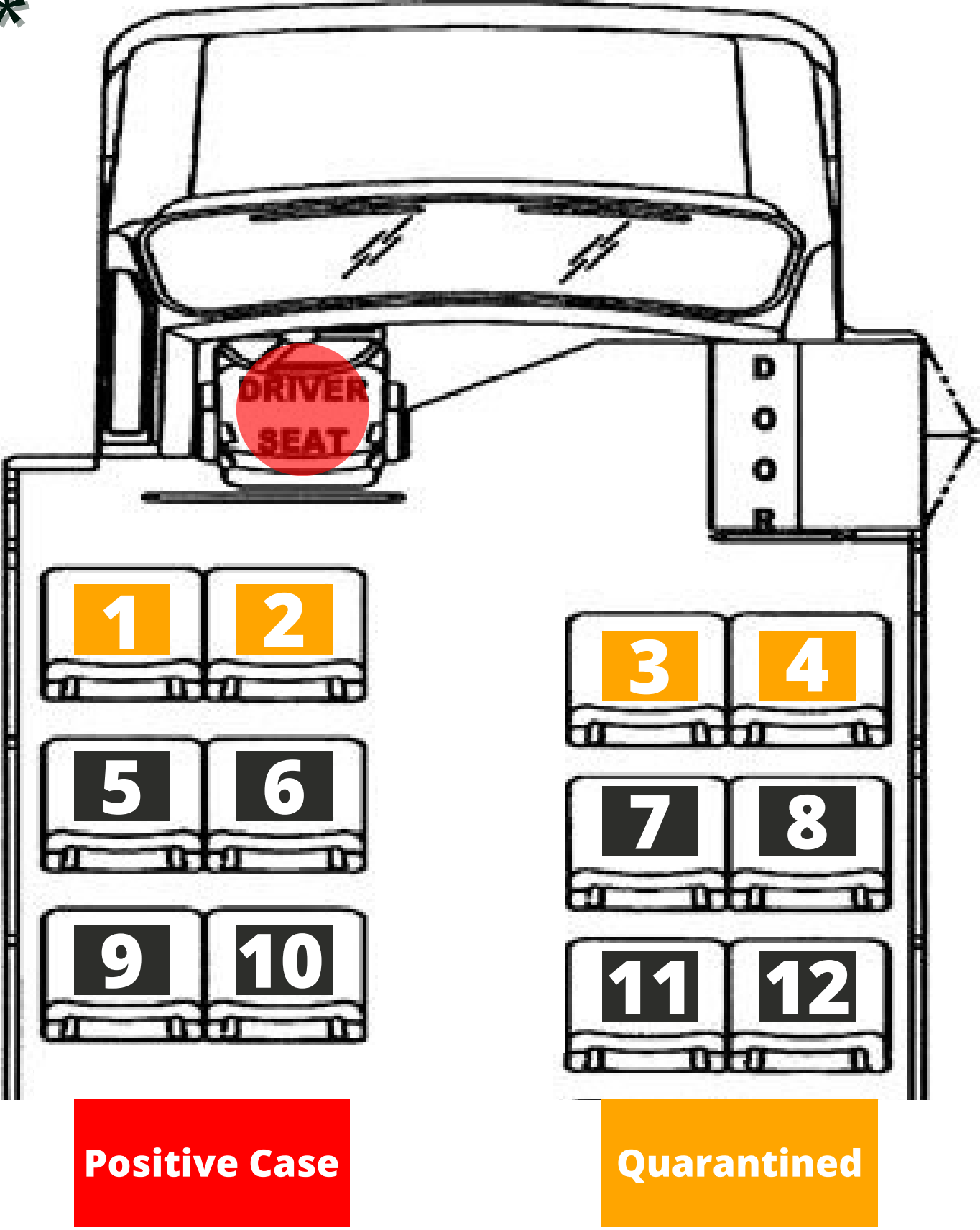
*While in general this algorithm can be used to determine close contacts after an exposure, decisions regarding isolation and quarantine will be made based on the LHD's review of all unique factors and extenuating circumstances. (i.e. physical contact, etc)

**Needs to be identified, vaccination record verified AND symptom status verified

***It is advisable for districts to notify families of a low-risk exposure when the individual doesn't meet the CDC criteria of a close contact

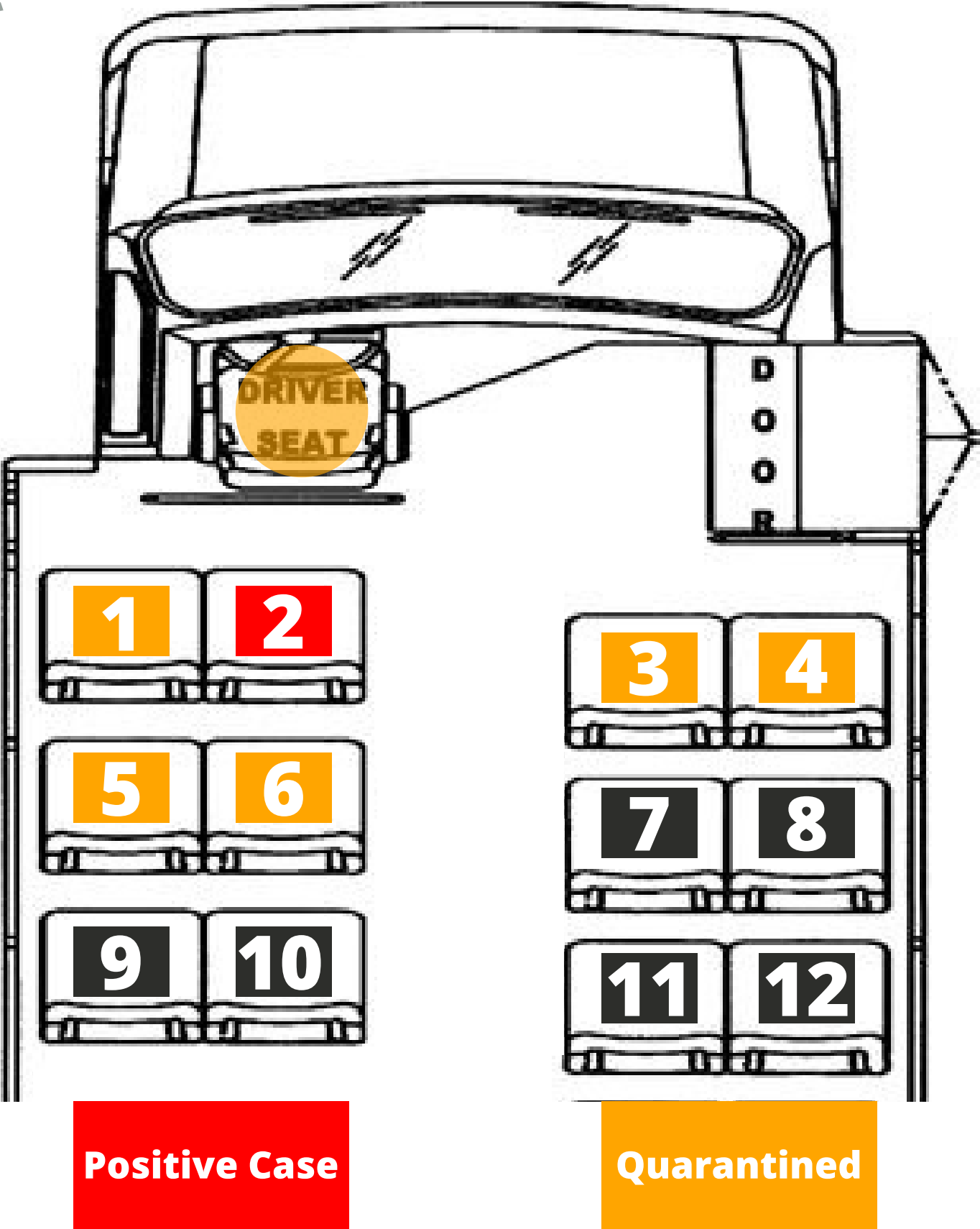
TRANSPORTATION DIAGRAM:

1*



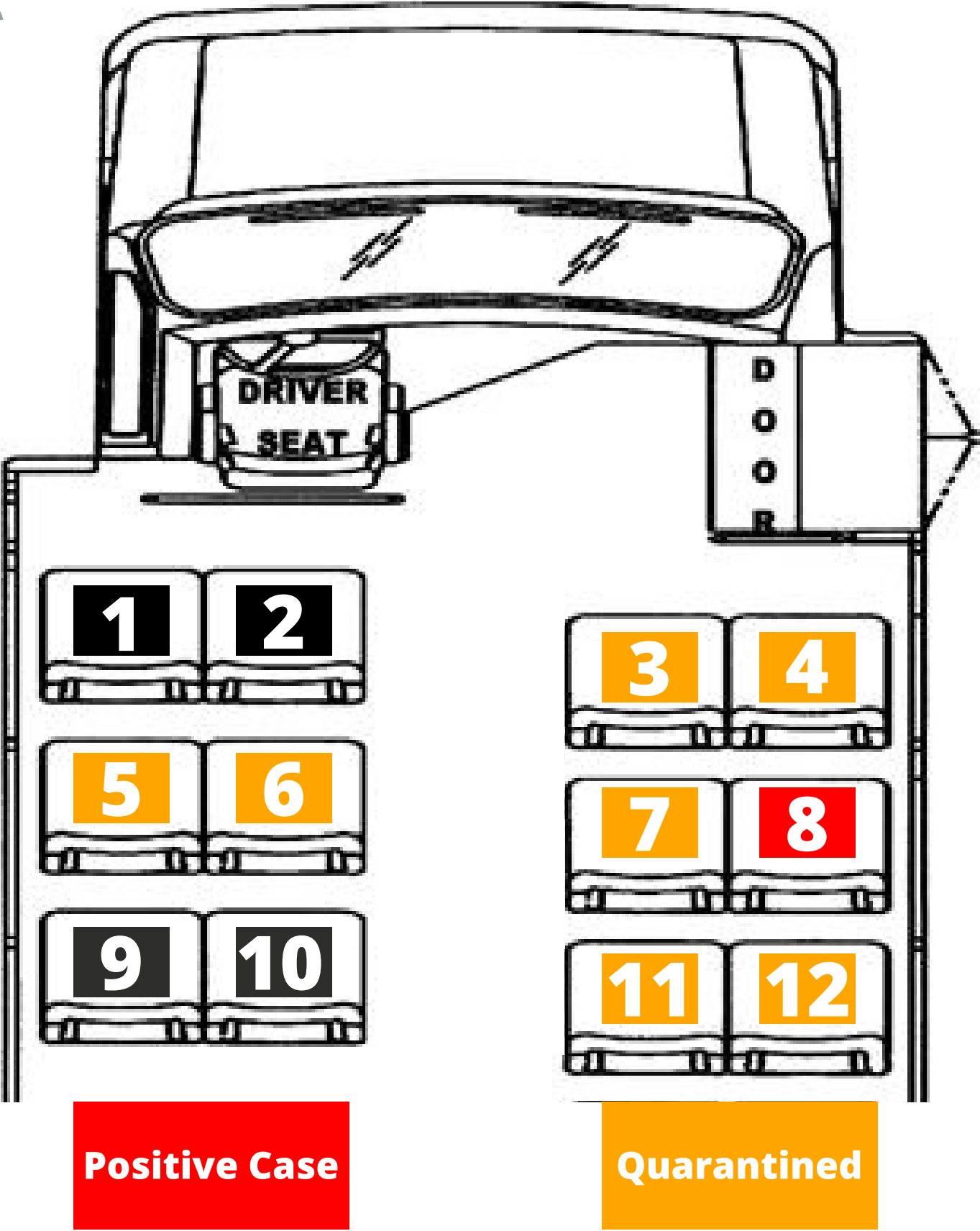
*While in general this algorithm can be used to determine close contacts after an exposure, decisions regarding isolation and quarantine will be made based on the LHD's review of all unique factors and extenuating circumstances. (i.e. physical contact, etc)

TRANSPORTATION DIAGRAM: 2*



*While in general this algorithm can be used to determine close contacts after an exposure, decisions regarding isolation and quarantine will be made based on the LHD's review of all unique factors and extenuating circumstances. (i.e. physical contact, etc)

TRANSPORTATION DIAGRAM: 3*



*While in general this algorithm can be used to determine close contacts after an exposure, decisions regarding isolation and quarantine will be made based on the LHD's review of all unique factors and extenuating circumstances. (i.e. physical contact, etc)